

COMMERCE PLAZA

242 E. Airport Drive, San Bernardino, CA



■ **AVAILABLE FOR LEASE:**

- Suite 107 - 1,137± SF - [Video Walk-Thru](#)
- Suite 112 - 1,143± SF - [Video Walk-Thru](#)
- Suite 205 - 1,123± SF - [Video Walk-Thru](#)

■ **Monthly Asking Lease Rate:**

- \$1.35 PSF (Modified Gross)
- Janitorial Services Included In Rate

■ **Features:**

- Move-in ready suites
- New construction underway to include kitchenettes/sinks in each suite.
- Energy Efficient Systems
- New flooring throughout
- Well maintained building with new energy efficient lighting throughout.
- Within walking distance to restaurants, including IHOP, Red Lobster, El Torito, and Claim Jumper
- Each suite separately metered for electricity



EXCLUSIVELY LISTED BY:

Allison Esbensen Scott Forest
aesbensen@WestMarCRE.com sforest@WestMarCRE.com
CA License: #01983671 CA License: #01396577

Founded in 1988
www.WestMarCRE.com
WestMar Commercial Real Estate

First Floor



FIRST FLOOR			
Suite	Sq. Ft.	Rate/ Month MG	Comments
100	1,803	----	GG Lee, DDS
105	1,072	----	Alan T. Walters Insurance Agency
106	5,296	-----	All Pro Broadcasting, Inc.
107	1,137	\$1.35	VACANT
108	1,137	----	MLM Medical
112	1,143	\$1.35	VACANT
113	1,175	----	Koning & Associates, Inc.

SECOND FLOOR

Suite	Sq. Ft.	Rate/ Month MG	Comments
202	1,732	-----	LC Media LP
203	1,076	-----	Calselect Insurance Services
204	1,689	-----	Institute for Public Strategies
205	1,123	\$1.35	VACANT
206	1,109	-----	Linda A. Lindsey
211	1,100	-----	Farmers Insurance Group Federal Credit Union
212	1,101	-----	Suresh Doddiah
213	1,133	-----	Josefina Valdez

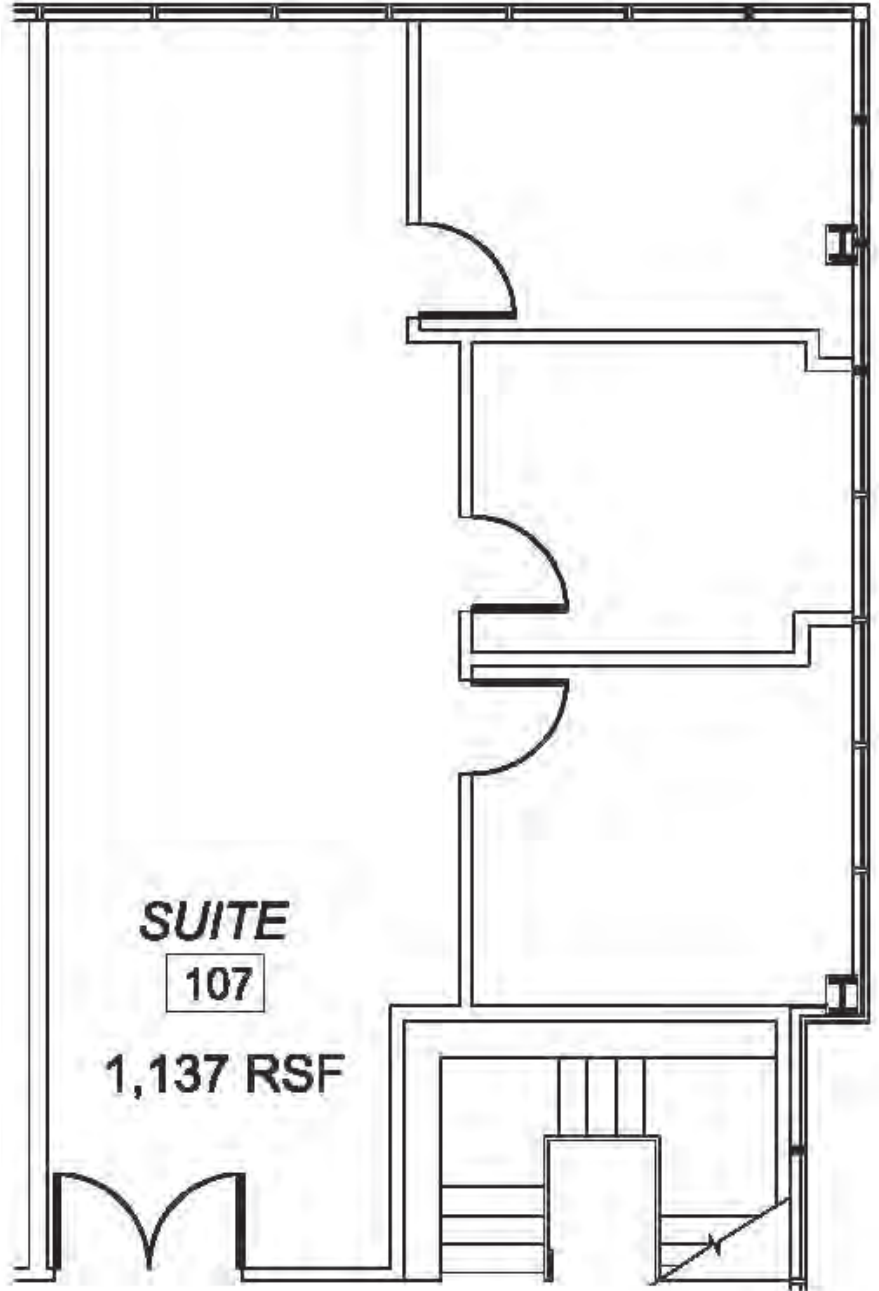
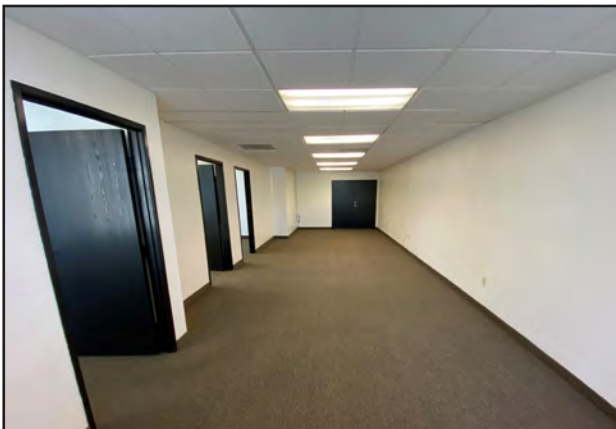
Second Floor



Janitorial Service Included in Lease Rate

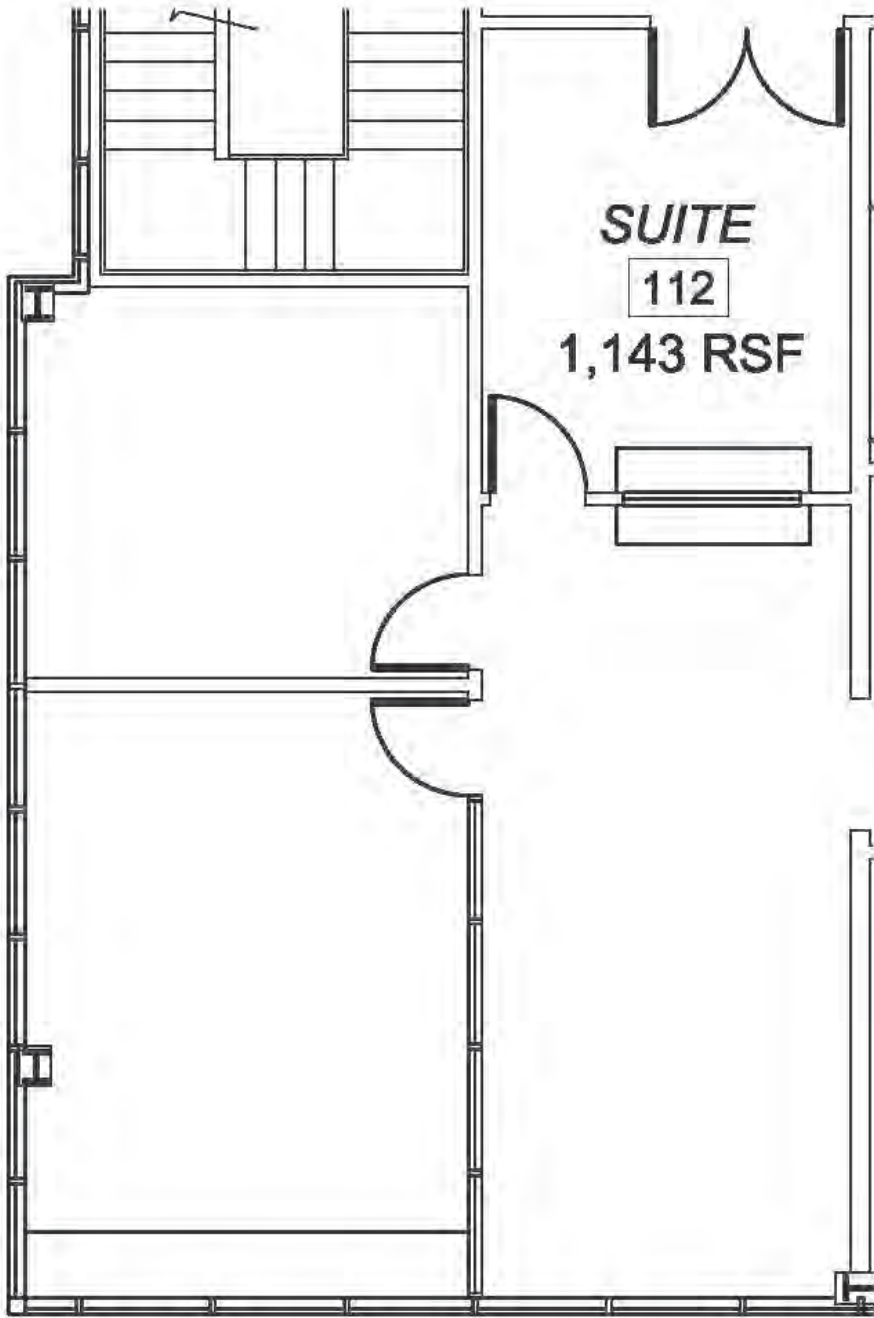


SUITE 107



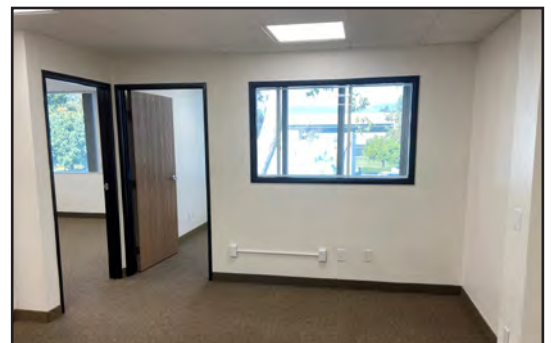
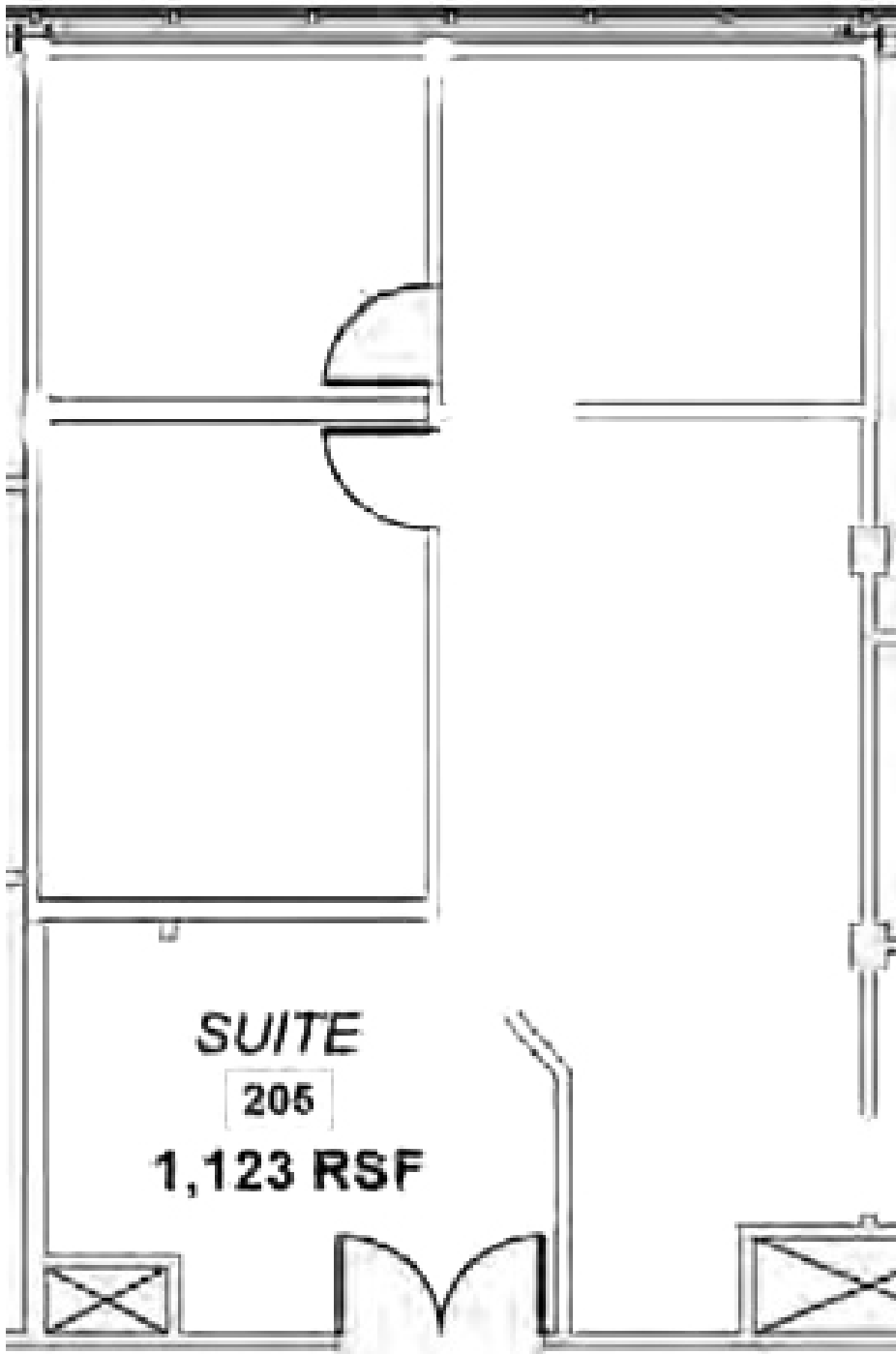
WESTMAR
COMMERCIAL REAL ESTATE

SUITE 112



WESTMAR
COMMERCIAL REAL ESTATE

SUITE 205



WESTMAR
COMMERCIAL REAL ESTATE