

FOR SALE

STATE STREET COMMERCIAL LAND

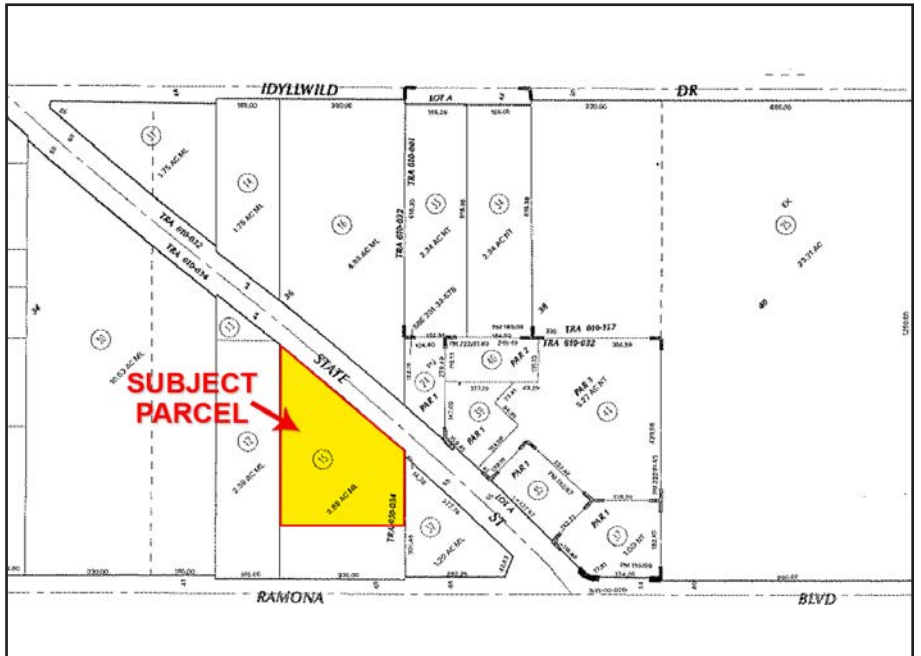
NWC STATE STREET AND RAMONA BOULEVARD, SAN JACINTO, CA 92582



WESTMAR
COMMERCIAL REAL ESTATE

Features:

- 1± to 2.23± Acres (may be split)
- Zoning: C-2 General Commercial (intended to serve as central shopping district)
- Examples of selected permitted uses include: medical office, restaurants, professional office, auto sales, banks and financial institutions, religious institutions, trade or vocational schools, veterinary office, hospitals, and others.
- Located in main retail corridor in San Jacinto, close proximity to Ramona Crossings, Mountain View Plaza, and Village at San Jacinto Shopping Centers.
- APN 434-070-043
- \$375,000 to \$650,000 (\$6.69± to \$8.60± PSF)



Demographics

Source: ESRI 2016	1 mile	3 mile	5 mile
2016 Population (Estimated)	12,925	61,520	135,959
2021 Population (Projected)	13,698	64,998	142,770

Traffic Counts

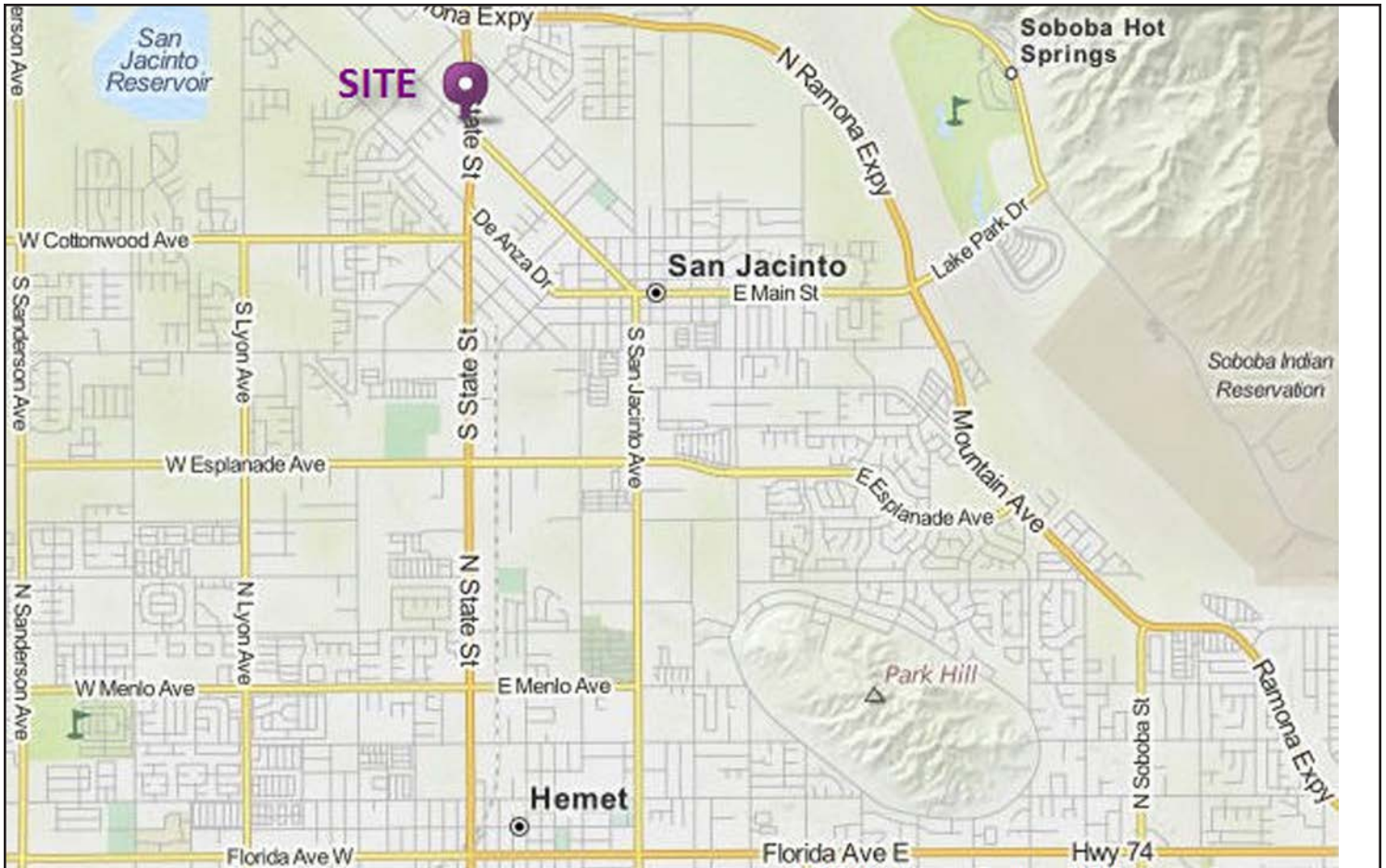
Source: CoStar	5 mile
State Street North of Ramona Blvd	15,252
Ramona Blvd West of State Street	5,115

EXCLUSIVELY LISTED BY:

Jerry Palmer
jpalmer@WestMarCRE.com
CA License: #01442207

The above information, while not guaranteed, has been secured from sources we believe to be reliable. Price, tenant mix, and availability subject to change without notice.

WestMar Commercial Real Estate
Founded in 1988
www.WestMarCRE.com



EXCLUSIVELY LISTED BY:

The above information, while not guaranteed, has been secured from sources we believe to be reliable. Price, tenant mix, and availability subject to change without notice.

Jerry Palmer
jpalmer@WestMarCRE.com
CA License: #01442207

WestMar Commercial Real Estate
Founded in 1988
www.WestMarCRE.com