

**LAKE ELSINORE FREEWAY ORIENTED FAST FOOD PADS  
AVAILABLE FOR BUILD TO SUIT**



**WESTMAR**  
COMMERCIAL REAL ESTATE

**INTERSTATE 15 FRONTAGE & VISIBILITY**  
**SWC INTERSTATE 15 AND NICHOLS ROAD, LAKE ELSINORE, CA**



■ Join at Intersection

- **APN:** 389-200-031 (1.40± Acres)
- **Conceptual Site Plan Attached**
- **Build-to-Suit Opportunity**

**Demographics**

Source: CoStar 2017	1 mile	3 mile	5 mile
2017 Population (Estimated)	623	36,016	72,350
2022 Population (Projected)	666	38,577	77,333
Daytime Employee Population	769	7,472	12,133
Average Household Income	\$79,067	\$72,999	\$74,112

**Traffic Counts**

Source: CalTrans 2015* and CoStar 2015**	ADT
Interstate 15 at Nichols Road*	118,000
Nichols Road at Collier Avenue**	6,752

**Features:**

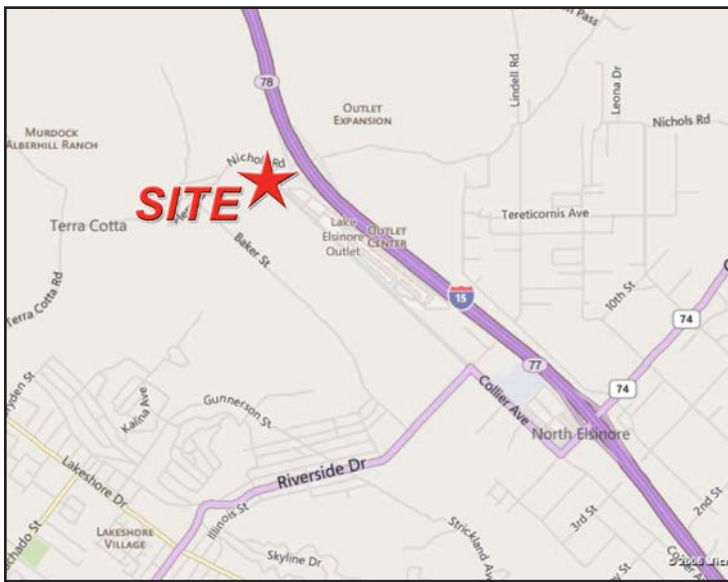
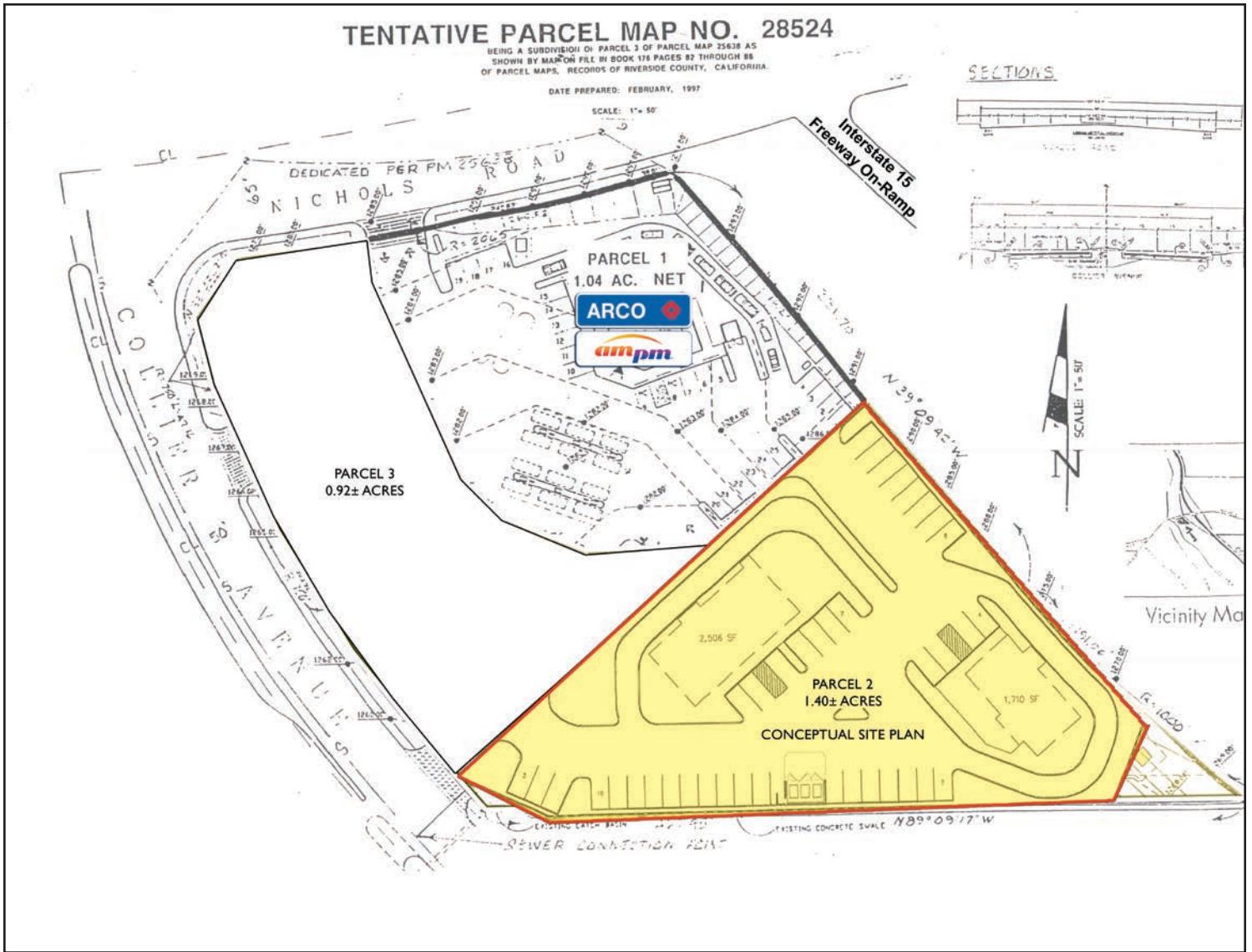
- Opportunity for freeway sign
- Located at the corner of Nichols Road and Colliers Avenue. (Scheduled to be signalized with future development of Alberhill Ranch project.)
- Excellent visibility from Interstate 15, Nichols Road, and Colliers Avenue
- Zoned CH (Commercial Highway)
- Adjacent to 372,476± SF Lake Elsinore Outlets, which boasts over 1,000,000 visitors per year
- Adjacent to busy Arco AM/PM which generates an average of 2,000 transactions per day
- At freeway on/off ramps that lead to several Alberhill planned residential communities, with in excess of 12,798± additional units at build-out.

**EXCLUSIVELY LISTED BY:**

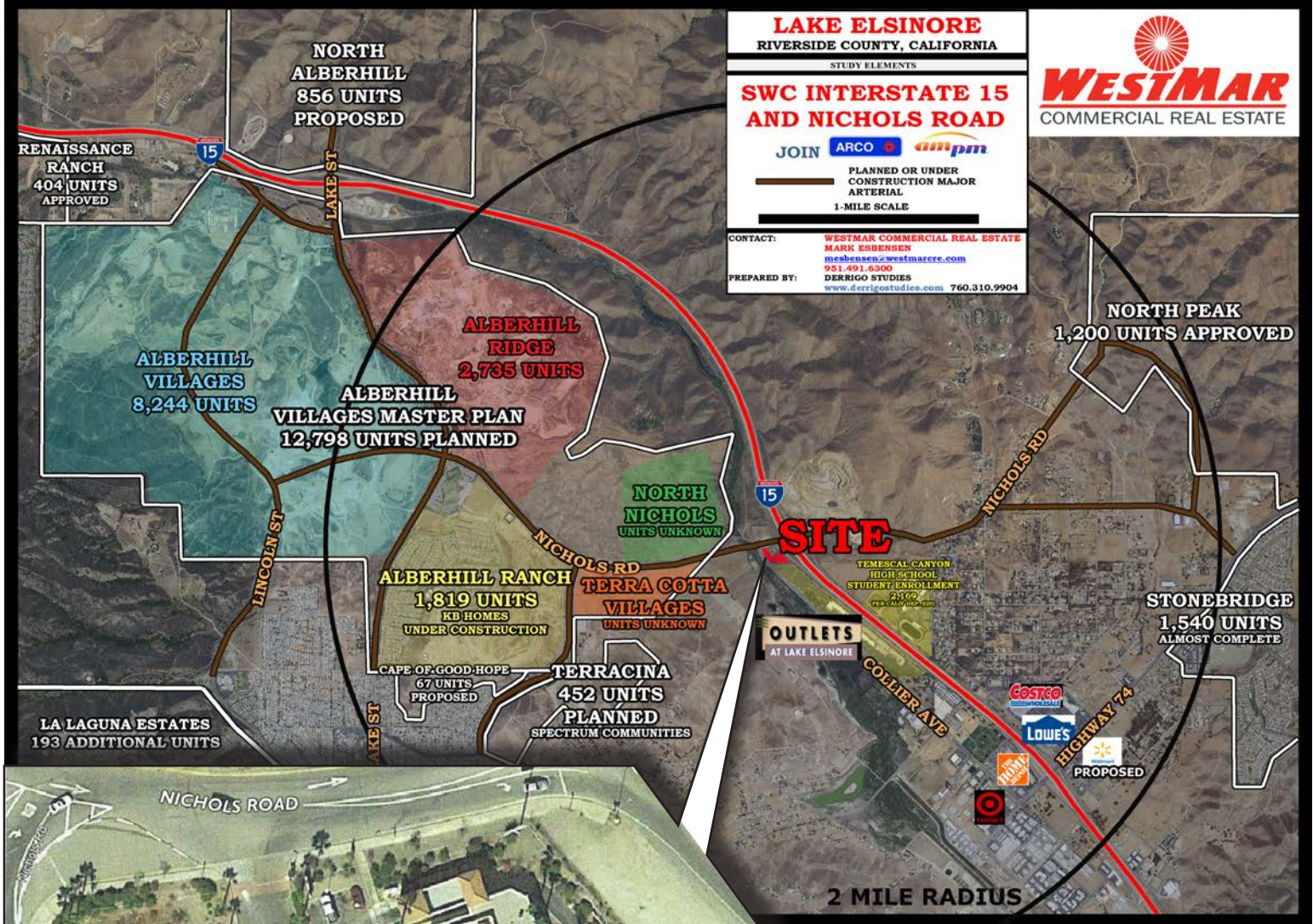
*The above information, while not guaranteed, has been secured from sources we believe to be reliable. Price, tenant mix, and availability subject to change without notice.*

**Mark Esbensen**  
mesbensen@WestMarCRE.com  
CA License: #00713990

**WestMar Commercial Real Estate**  
*Founded in 1988*  
[www.WestMarCRE.com](http://www.WestMarCRE.com)



The above information, while not guaranteed, has been secured from sources we believe to be reliable.



The above information, while not guaranteed, has been secured from sources we believe to be reliable.