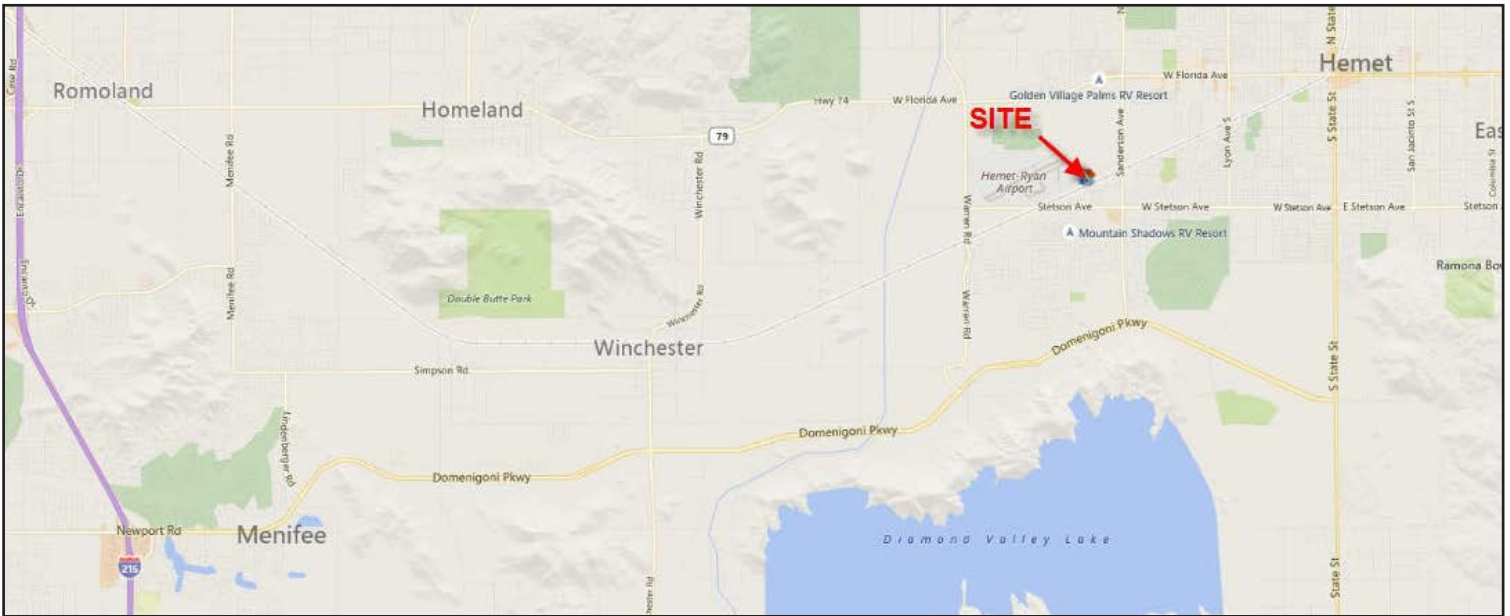


WENTWORTH PLACE

3880 Wentworth Drive, Hemet, CA 92545



- New Construction - 2018 Delivery
- ±6,994 SF Available to Customize
- Demisable Upon Tenant Requirement (2,291 - 6,994 SF)
- Close Proximity to Sanderson Avenue and Domenigoni Parkway
- \$0.90 PSF, Industrial Gross



Features:

- Concrete Tilt-up Construction Adjacent to Hemet-Ryan Airport
- Located in Highly Flexible M-2 Zone (Tenant to verify usage)
- Co-Tenancy with 1st Certified Collision Centers
- APN: 456-040-041

EXCLUSIVELY LISTED BY:

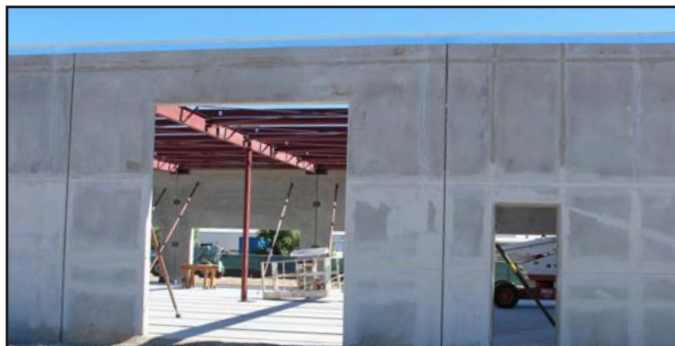
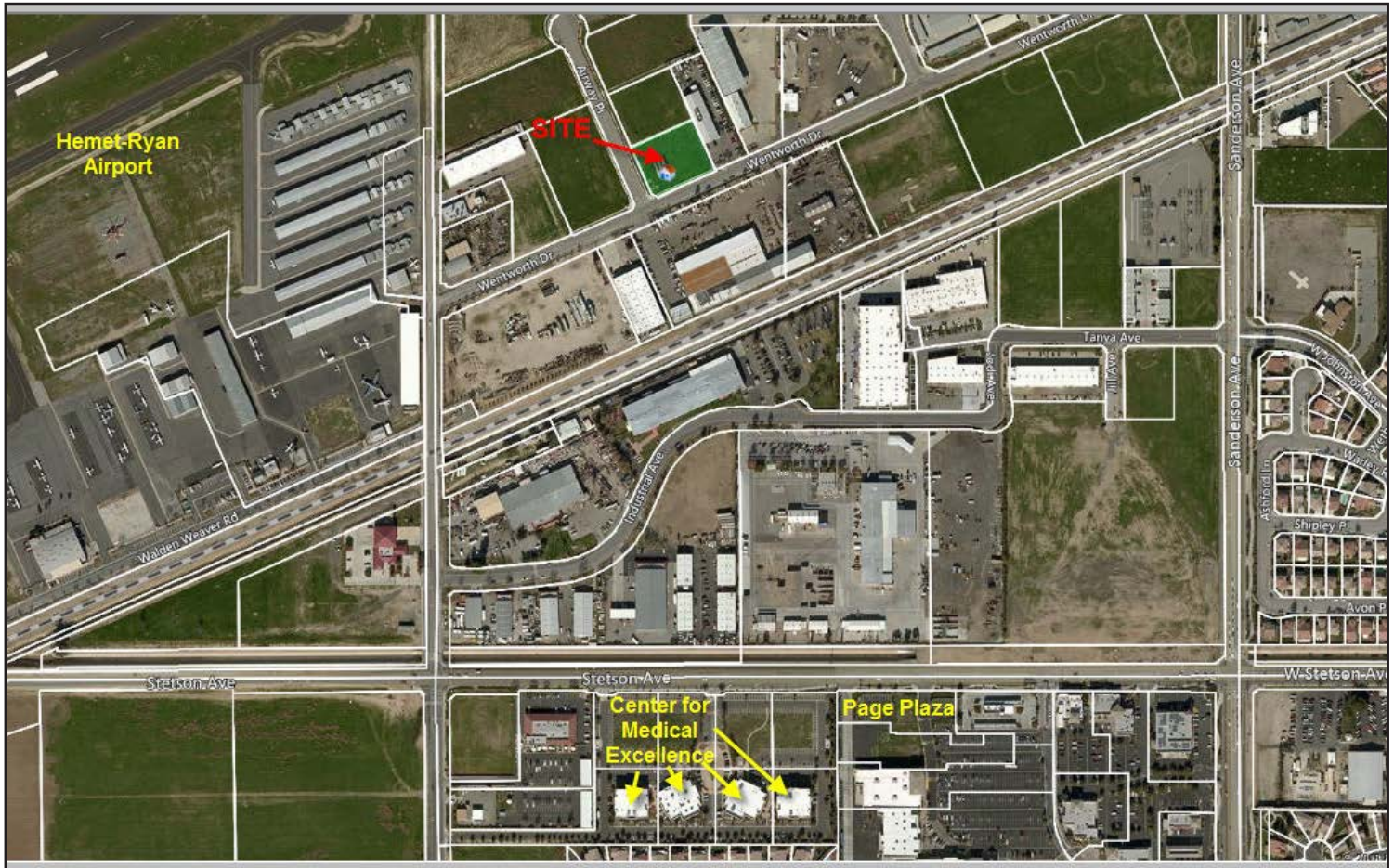
Jerry Palmer

jpalmer@WestMarCRE.com

CA License: #01442207

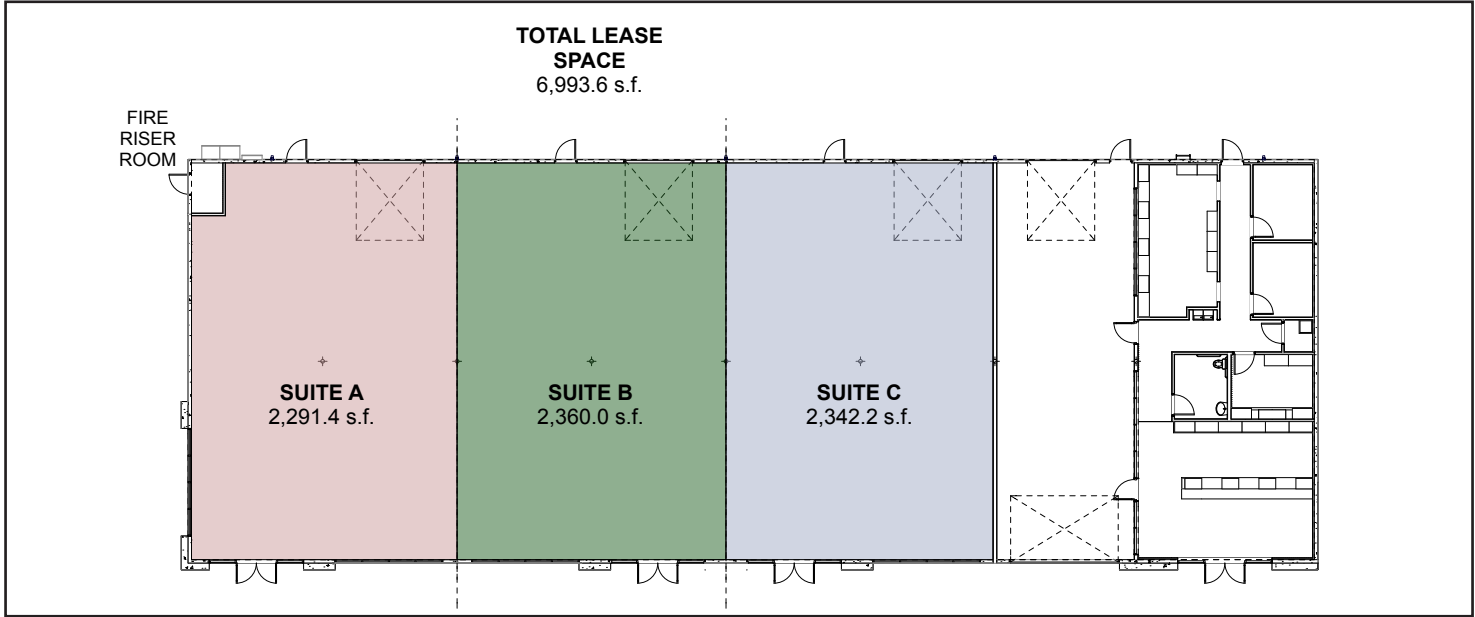
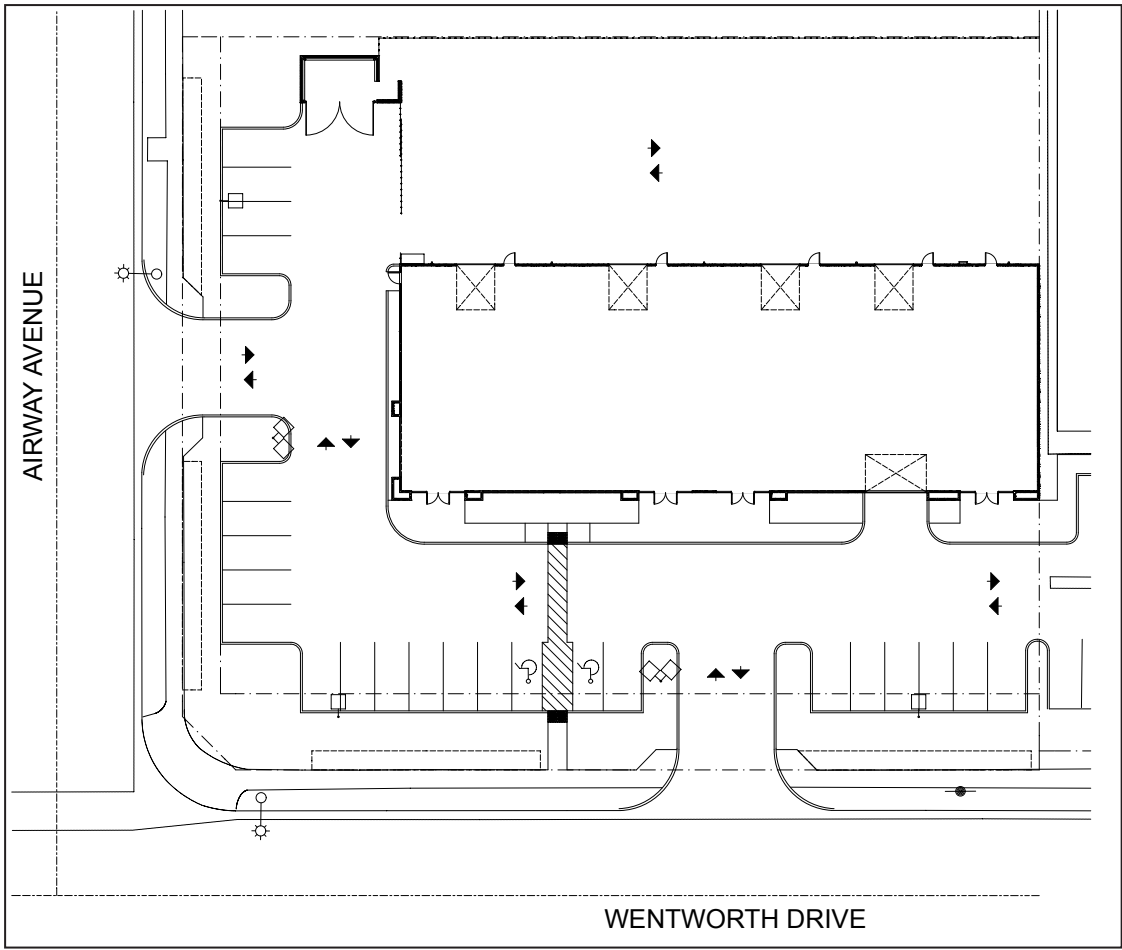
Founded in 1988
www.WestMarCRE.com
WestMar Commercial Real Estate

FOR LEASE: WENTWORTH PLACE (MULTI-TENANT INDUSTRIAL)



The above information, while not guaranteed, has been secured from sources we believe to be reliable.

FOR LEASE: WENTWORTH PLACE (MULTI-TENANT INDUSTRIAL)



The above information, while not guaranteed, has been secured from sources we believe to be reliable.